

Light efficiency:

37 Lumen/Watt

Light quality:

CRI: 76.8

Color temperature:

2941 K

Output: 12119 lm

Peak: 53575 cd

Power: 331 W

PF: 1.0



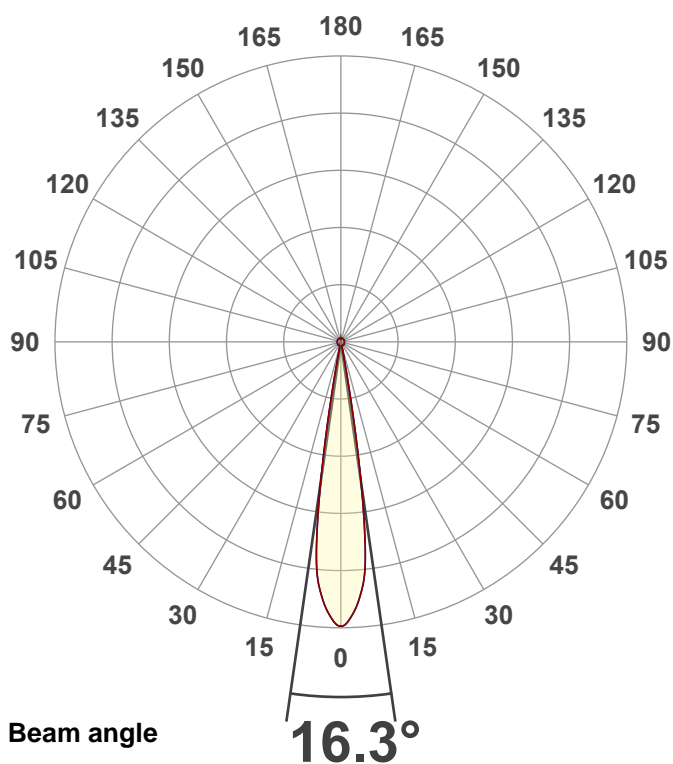
Product name:

Hydro Flex L7 (Zoom 50% 3000K)

Item number:

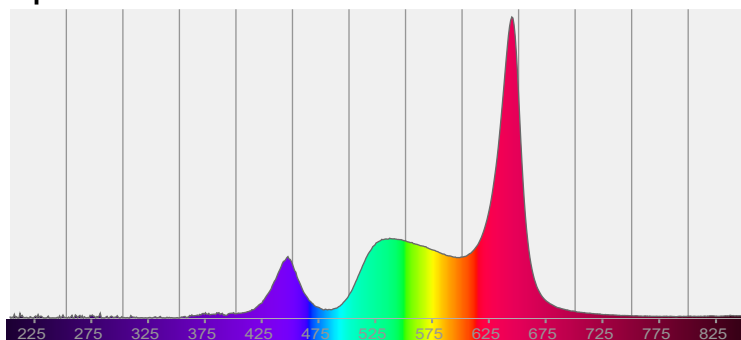
Date and time:

8/25/2025 3:06:54 PM



CIE 1931
x: 0.436
y: 0.395

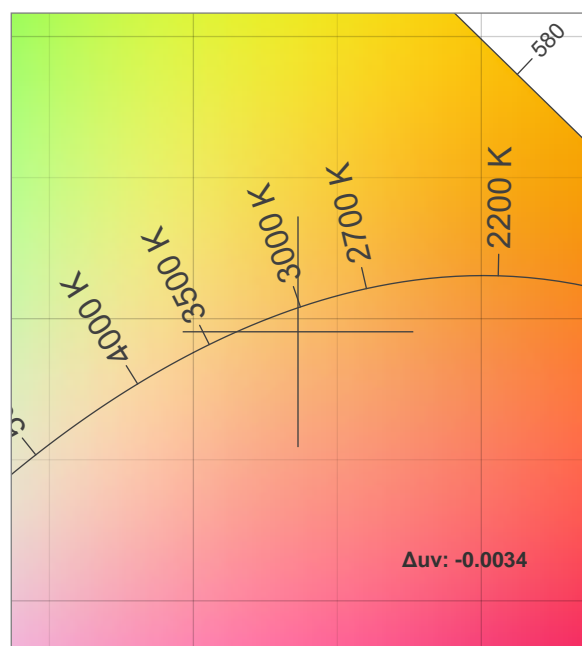
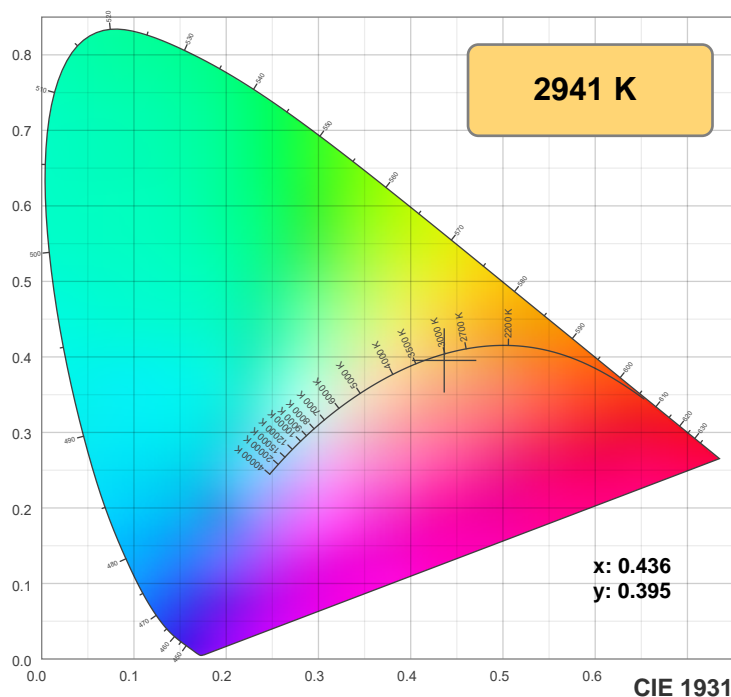
Spectra



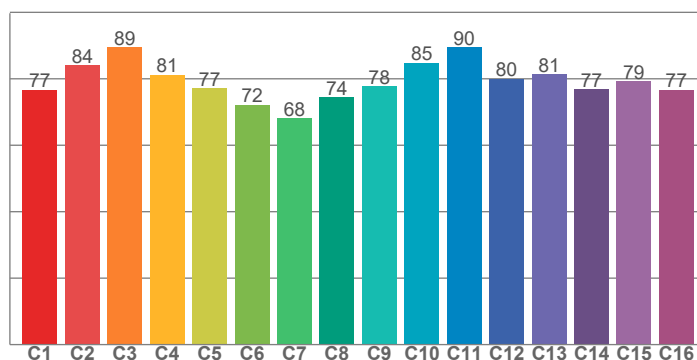
Power

Voltage: 115 V
Current: 2.88 A
Frequency: 0 Hz

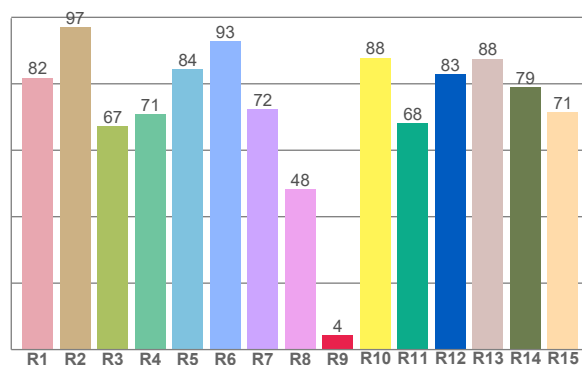
Color details



TM-30: 80.0



CRI: 76.8 (R1-R8)



CRI R values, only R1-R8 are used to calculate final CRI value

R1	R2	R3	R4	R5	R6	R7	R8	R9	R10	R11	R12	R13	R14	R15
81.8	97.1	67.2	70.8	84.5	92.7	72.4	48.2	4.4	87.9	68.3	82.8	87.6	79.0	71.4

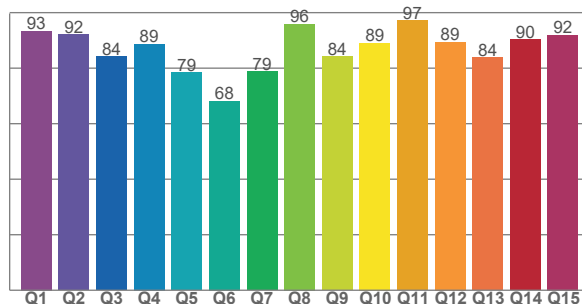
TM30 C values, 16 binned values out of total of 99 C values

C1	C2	C3	C4	C5	C6	C7	C8	C9	C10	C11	C12	C13	C14	C15	C16
76.7	84.0	89.5	81.2	77.2	72.1	68.1	74.5	77.7	84.9	89.5	80.0	81.4	76.9	79.2	76.7

CQS Q values

Q1	Q2	Q3	Q4	Q5	Q6	Q7	Q8	Q9	Q10	Q11	Q12	Q13	Q14	Q15
93.3	92.2	84.2	88.7	78.5	68.1	78.8	95.9	84.2	89.0	97.1	89.3	83.8	90.4	91.9

CQS: 84.8



Color parameters

Color temperature	Color rendering index	Red component	Color fidelity	Color gamut	Color quality scale	Color coordinate cie 1931	Color coordinate cie 1931	Color coordinate	Color coordinate	Color deviation from black body
CCT	CRI	CRI R9	TM30 Rf	TM30 Rg	CQS	x	y	u	v	Δuv
2941 K	76.8	4.4	80.0	116.8	84.8	0.436	0.395	0.254	0.345	-0.0034

TM-30 details

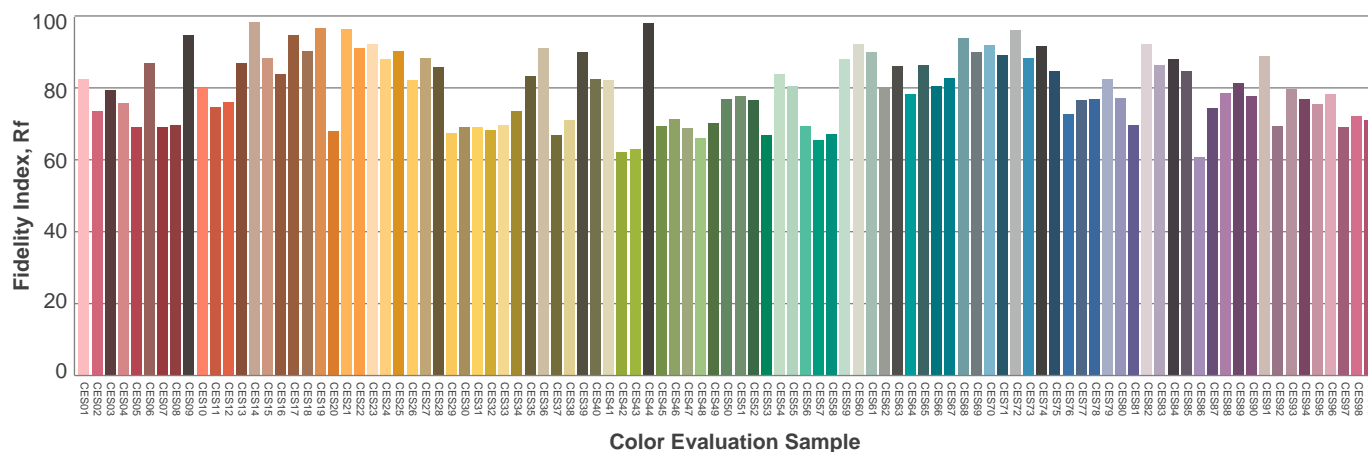
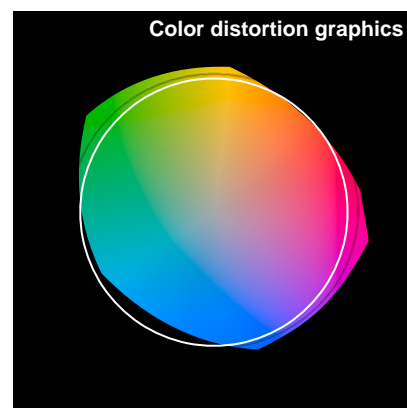
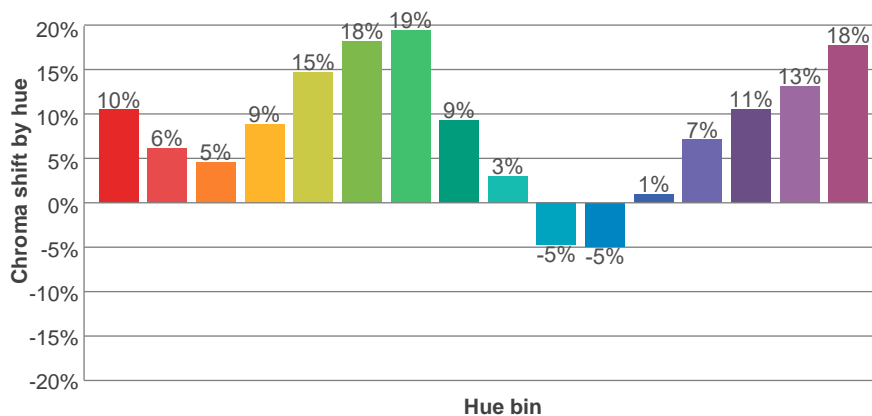
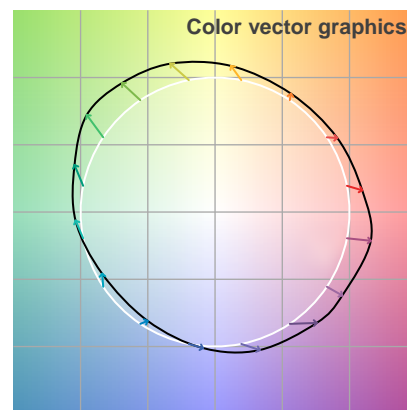
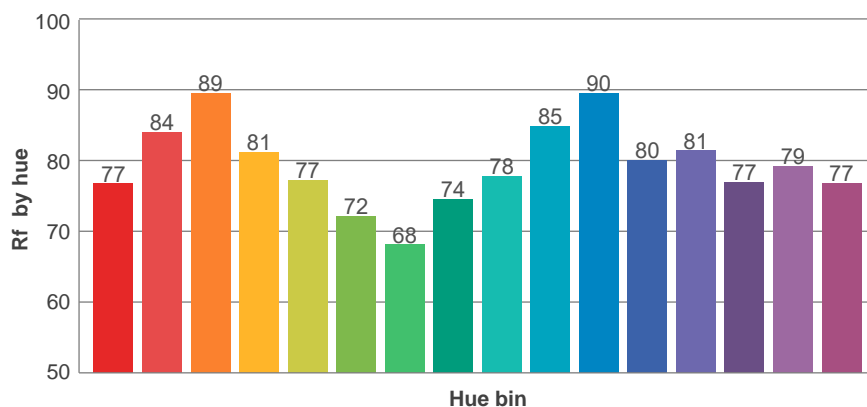
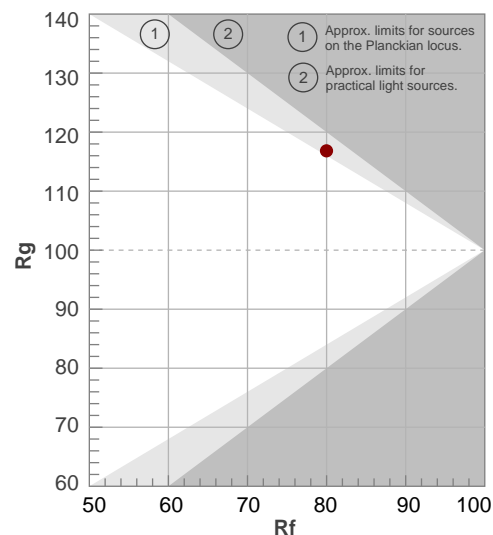
Rf 80.0

Fidelity index Rf

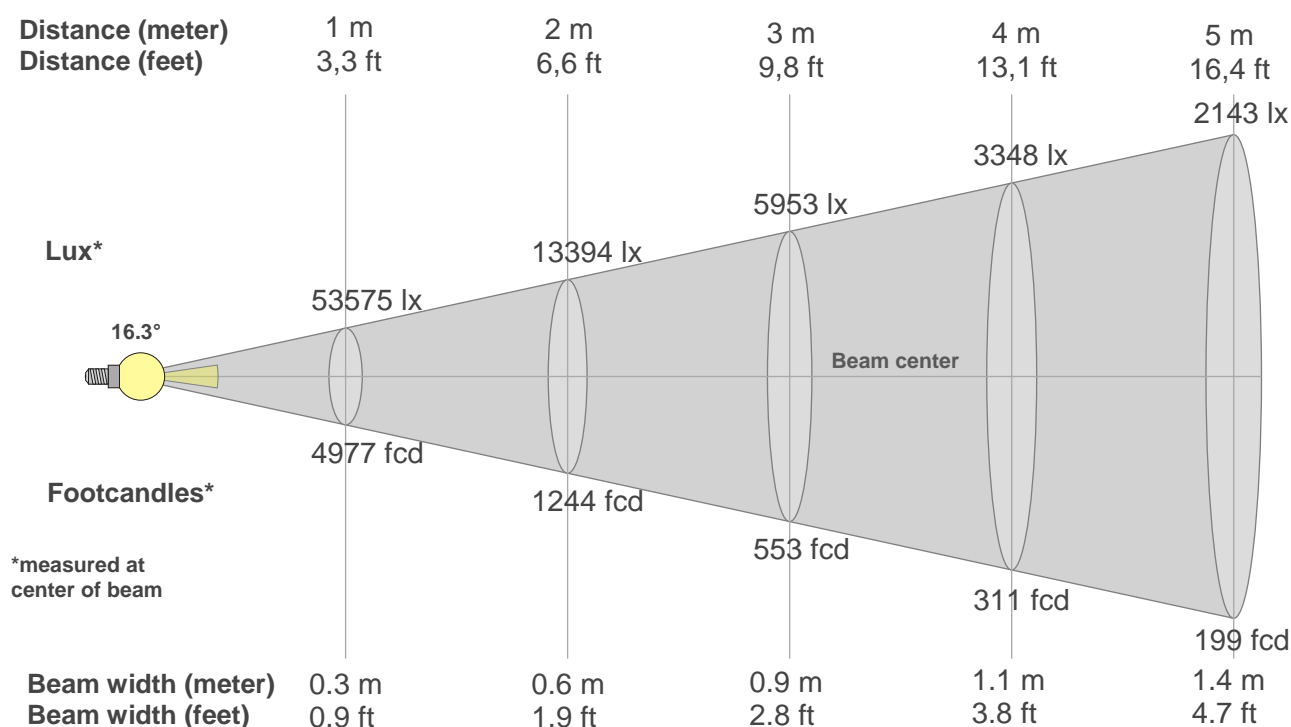
Rg 116.8

Gamut index Rg

Hue Bin	R _f	Shifts (%)	
		Chroma	Hue
1	77	10%	-6%
2	84	6%	-5%
3	89	5%	2%
4	81	9%	10%
5	77	15%	11%
6	72	18%	4%
7	68	19%	-7%
8	74	9%	-14%
9	78	3%	-14%
10	85	-5%	-8%
11	90	-5%	3%
12	80	1%	11%
13	81	7%	13%
14	77	11%	17%
15	79	13%	1%
16	77	18%	2%



Beam details



Beam intensities from 1-20m

1m	2m	3m	4m	5m	6m	7m	8m	9m	10m	11m	12m	13m	14m	15m	16m	17m	18m	19m	20m
3.3ft	6.6ft	9.8ft	13.1ft	16.4ft	19.7ft	23ft	26.2ft	29.5ft	32.8ft	36.1ft	39.4ft	42.7ft	45.9ft	49.2ft	52.5ft	55.8ft	59.1ft	62.3ft	65.6ft
53575lx	13394lx	5953lx	3348lx	2143lx	1488lx	1093lx	837lx	661lx	536lx	443lx	372lx	317lx	273lx	238lx	209lx	185lx	165lx	148lx	134lx
4977.3fcd	1244.3fcd	553fcd	311.1fcd	199.1fcd	138.3fcd	101.6fcd	77.8fcd	61.4fcd	49.8fcd	41.1fcd	34.6fcd	29.5fcd	25.4fcd	22.1fcd	19.4fcd	17.2fcd	15.4fcd	13.8fcd	12.4fcd

Intensities in 0° c-plane

0°	1°	2°	3°	4°	5°	6°	7°	8°	9°	10°	11°	12°	13°	14°	15°	16°	17°	18°	19°
53.6k	53.2k	52.1k	50.6k	48.8k	46.5k	43.3k	37.2k	28.4k	18.4k	9.0k	3.3k	1.4k	0.9k	0.8k	0.8k	0.8k	0.8k	0.8k	0.8k
100%	99%	97%	94%	91%	87%	81%	69%	53%	34%	17%	6%	3%	2%	2%	2%	1%	1%	1%	1%

Intensities in 90° c-plane

0°	1°	2°	3°	4°	5°	6°	7°	8°	9°	10°	11°	12°	13°	14°	15°	16°	17°	18°	19°
53.6k	53.2k	52.1k	50.6k	48.8k	46.5k	43.3k	37.2k	28.4k	18.4k	9.0k	3.3k	1.4k	0.9k	0.8k	0.8k	0.8k	0.8k	0.8k	0.8k
100%	99%	97%	94%	91%	87%	81%	69%	53%	34%	17%	6%	3%	2%	2%	2%	1%	1%	1%	1%

Intensities in 180° c-plane

0°	1°	2°	3°	4°	5°	6°	7°	8°	9°	10°	11°	12°	13°	14°	15°	16°	17°	18°	19°
53.6k	53.2k	52.1k	50.6k	48.8k	46.5k	43.3k	37.2k	28.4k	18.4k	9.0k	3.3k	1.4k	0.9k	0.8k	0.8k	0.8k	0.8k	0.8k	0.8k
100%	99%	97%	94%	91%	87%	81%	69%	53%	34%	17%	6%	3%	2%	2%	2%	1%	1%	1%	1%

Intensities in 270° c-plane

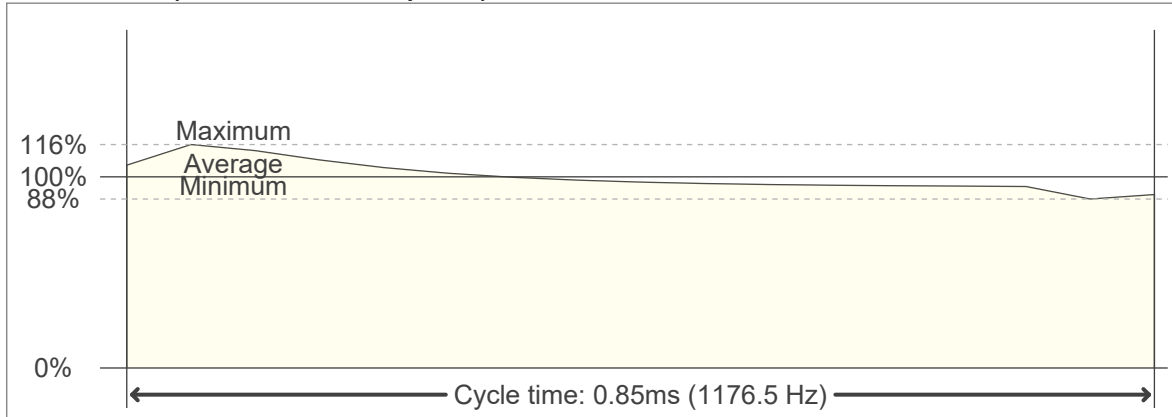
0°	1°	2°	3°	4°	5°	6°	7°	8°	9°	10°	11°	12°	13°	14°	15°	16°	17°	18°	19°
53.6k	53.2k	52.1k	50.6k	48.8k	46.5k	43.3k	37.2k	28.4k	18.4k	9.0k	3.3k	1.4k	0.9k	0.8k	0.8k	0.8k	0.8k	0.8k	0.8k
100%	99%	97%	94%	91%	87%	81%	69%	53%	34%	17%	6%	3%	2%	2%	2%	1%	1%	1%	1%

Beam angle 50%	Field angle 10%	Cutoff angle 2,5%	Intensity ratio in 120° cone	Intensity ratio in 90° cone
16.3°	21.1°	24°	46.7%	39.0%

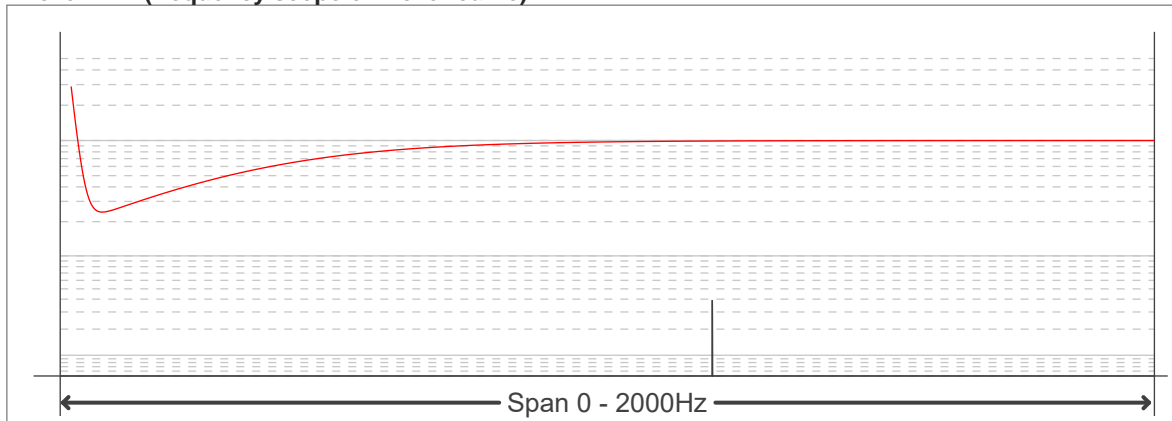
Flicker curve (complete sampled flicker signal)



Flicker frame (frame of one flicker period)



Flicker FFT (frequency scope of flicker curve)



Flicker results:

Flicker frequency:		1176.47 Hz	
Flicker index:	0.03	JA8/10 40Hz	0.47 %
Flicker percentage:	31.49 %	JA8/10 90Hz	1 %
SVM: (Visual flicker)	0.08	JA8/10 200Hz	2.16 %
PstLM	0	JA8/10 400Hz	4.12 %
Mp	0.13	JA8/10 1000Hz	8.83 %

Flicker conditions:

Sample rate:	20000 samples/second
--------------	----------------------